

Guitar
Capo 1: Key A

Sing!

Brad Bichsel, Jess Cates, Matt Armstrong,
Joshua Silverberg, Markus Huber

INTRO

Capo:1:
♩ = 101

D
E^b

F
F

G^bM
G^M

D
E^b

F
F

G^bM
G^M



synth only

D
E^b

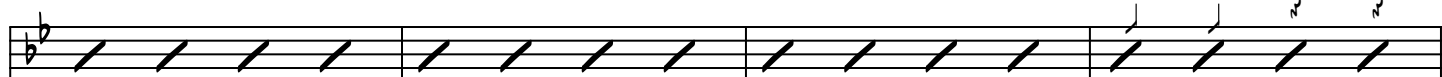
F
F

G^bM
G^M

D
E^b

F
F

G^bM
G^M



5 full band

VERSE

A
B^b

B^M
C^M

G^bM
G^M

F
F

A
B^b

B^M
C^M

G^bM
G^M

F
F



9

D
E^b

F
F

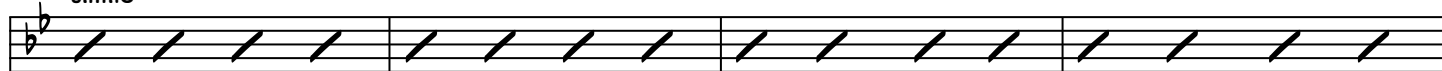
A
B^b

B^M
C^M

G^bM
G^M

F
F

simile



13

A
B^b

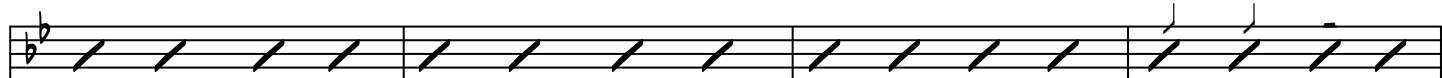
B^M
C^M

G^bM
G^M

F
F

D
E^b

F
F



17

CHORUS

D
E^b

F
F

G^bM
G^M

D
E^b

F
F

G^bM
G^M

D
E^b

F
F

G^bM
G^M

straight rhythm



21

CCLI #7101414

© 2018 Brad and Rebekah (BMI) Admin by Heritage Worship Music Publishing

One Skylight Music (SESAC) | Word Music, LLC / Eyes Up Songs (SESAC)

River Wild (SESAC) Admin by Curb Congregational Songs | Fancy Socks (BMI)

www.bradandrebekah.com

$\begin{matrix} D \\ E^b \end{matrix}$ $\begin{matrix} E \\ F \end{matrix}$ $\begin{matrix} D \\ E^b \end{matrix}$ $\begin{matrix} E \\ F \end{matrix}$ $\begin{matrix} G^b M \\ G_M \end{matrix}$ $\begin{matrix} D \\ E^b \end{matrix}$ $\begin{matrix} E \\ F \end{matrix}$ $\begin{matrix} G^b M \\ G_M \end{matrix}$ 

27

BRIDGE $\begin{matrix} D \\ E^b \end{matrix}$ $\begin{matrix} A \\ B^b \end{matrix}$

(EB F)

 $\begin{matrix} G^b M \\ G_M \end{matrix}$ $\begin{matrix} E \\ F \end{matrix}$ 

33

1st x drums down (16th's, accents on rhythm)

2nd x drums half up

 $\begin{matrix} D \\ E^b \end{matrix}$ $\begin{matrix} E \\ F \end{matrix}$ $\begin{matrix} G^b M \\ G_M \end{matrix}$ $\begin{matrix} D \\ E^b \end{matrix}$ $\begin{matrix} E \\ F \end{matrix}$ $\begin{matrix} G^b M \\ G_M \end{matrix}$ 

41

CHORUS $\begin{matrix} D \\ E^b \end{matrix}$ $\begin{matrix} E \\ F \end{matrix}$ $\begin{matrix} G^b M \\ G_M \end{matrix}$ $\begin{matrix} D \\ E^b \end{matrix}$ $\begin{matrix} E \\ F \end{matrix}$ $\begin{matrix} G^b M \\ G_M \end{matrix}$ 

45

straight rhythm

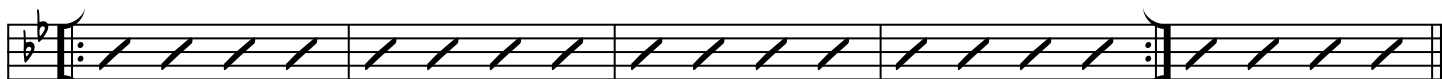
full rhythm

 $\begin{matrix} D \\ E^b \end{matrix}$ $\begin{matrix} E \\ F \end{matrix}$ $\begin{matrix} G^b M \\ G_M \end{matrix}$ $\begin{matrix} D \\ E^b \end{matrix}$ $\begin{matrix} E \\ F \end{matrix}$ 

49

ENDING $\begin{matrix} D \\ E^b \end{matrix}$ $\begin{matrix} E \\ F \end{matrix}$ $\begin{matrix} G^b M \\ G_M \end{matrix}$ $\begin{matrix} D \\ E^b \end{matrix}$ $\begin{matrix} E \\ F \end{matrix}$ $\begin{matrix} G^b M \\ G_M \end{matrix}$ N.C.
N.C.

FINE



53

vocal only