

All Things Collide (Page 1 of 2)

Brad Bichsel

INTRO

Dsus2 Dmaj9 | Dsus2 Dmaj9 | Asus A | A2 A
Gl - - - - o - - - - ri - - - - a
Dsus2 Dmaj9 | Dsus2 Dmaj9 | Asus A | A2 A
Gl - - - - o - - - - ri - - - - a

VERSE 1

D E Dsus2 Dmaj9 | Dsus2 Dmaj9
Heavenly romance tonight
D E Asus A | Asus2 A
Hear the angels sing His life
D E
The Savior of all the world
Bm A/C# | F#m
Has come down to us

CHORUS

D E
This is the night, when all things collide
F#m E D
And heaven and earth become one
D E
Where shepherds and kings fall down on their knees
F#m E D F#m7 E
To worship the Savior, the Son of God has come

INTERLUDE

Dsus2 Dmaj9 | Dsus2 Dmaj9

VERSE 2

Humble to come as He came
From heavenly robes, to the manger where He lays
The kingdoms of all the world
Fall before this babe

CHORUS

All Things Collide (Page 2 of 2)

INSTRUMENTAL

D E | F#m (2x)

BRIDGE

D E F#m E
Glory in the highest
D E F#m E
Glory is among us

CHORUS 2

D E
This is the night, when all things collide
F#m E D
And heaven and earth become one
D E
Where shepherds and kings fall down on their knees
F#m E D E
To worship the Savior, the Son of God
D E
This is the night, when all things collide
F#m E D
And heaven and earth become one
D E
Where shepherds and kings fall down on their knees
F#m E D F#m E
To worship the Savior, the Son of God
D F#m | E A/C# A
Oh the Christ has come
D E
This is the night, when all things collide

OUT

Asus A | A2 A
D

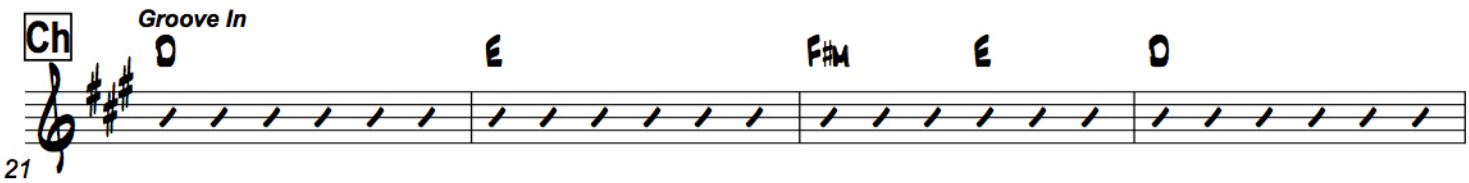
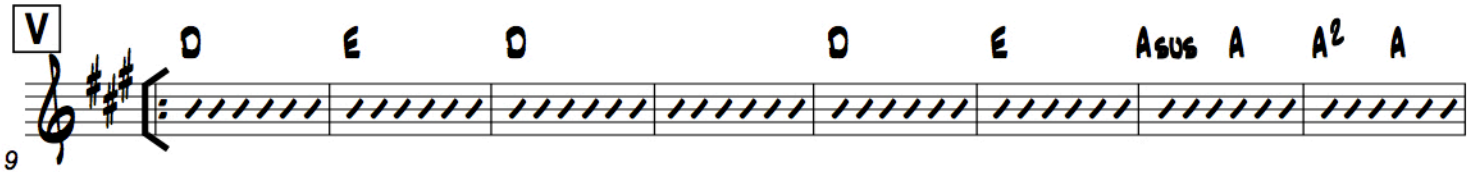
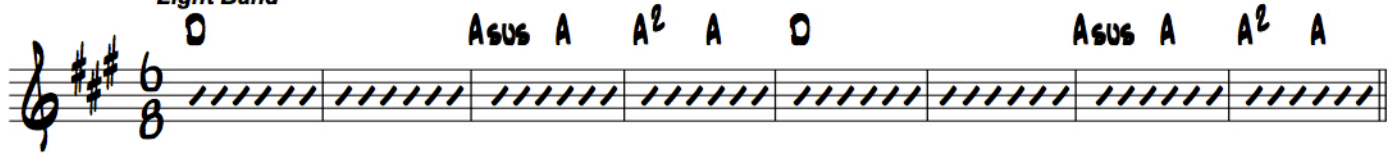
Rhythm

♩ = 148

All Things Collide

(based on the recording from the Brad & Rebekah album Gift of Grace)

Light Band



48

Chord progression for measures 48-52: D, E, F#m, E, D, E. The staff shows rhythmic notation with slanted lines for each measure.

53

Ch

Chord progression for measures 53-57: D, E, F#m, E, D, D, E, F#m, E. The staff shows rhythmic notation with slanted lines for each measure.

60

Chord progression for measures 60-63: D, F#m, E, D, F#m, E, A/C#. The staff shows rhythmic notation with slanted lines for measures 60-62, and quarter notes for measure 63.

64

Chord progression for measures 64-67: D, Asus, A, A2, A. The staff shows rhythmic notation with slanted lines for each measure.

68

Chord progression for measures 68-72: D, Asus, A, A2, A, D. The staff shows rhythmic notation with slanted lines for measures 68-71, and a whole note for measure 72.